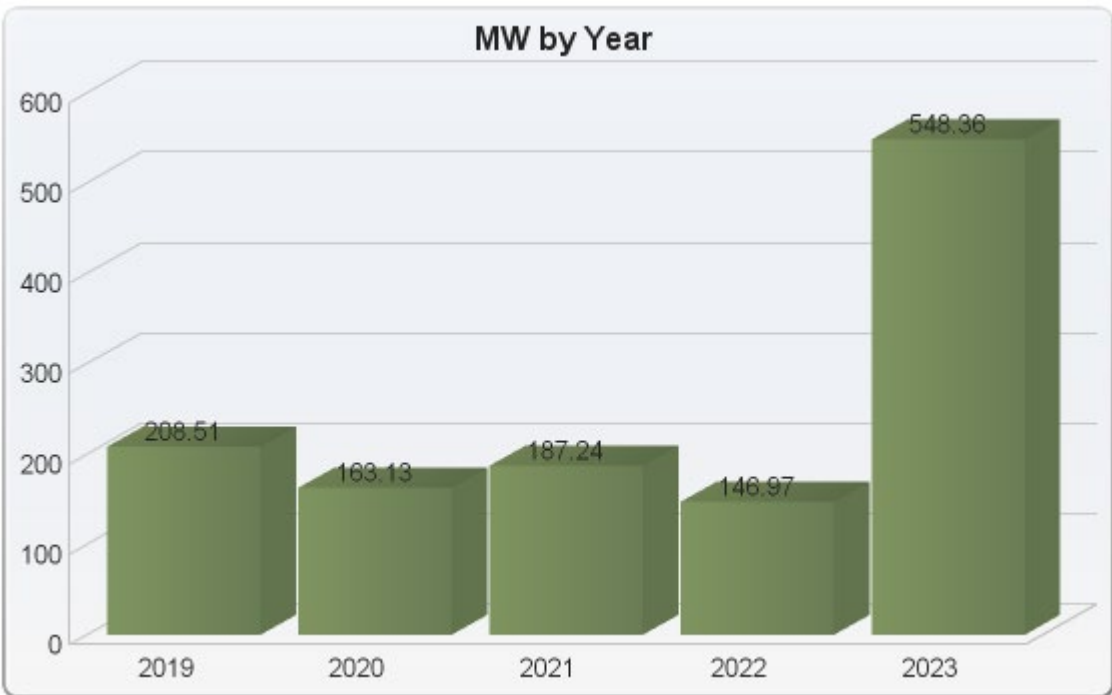
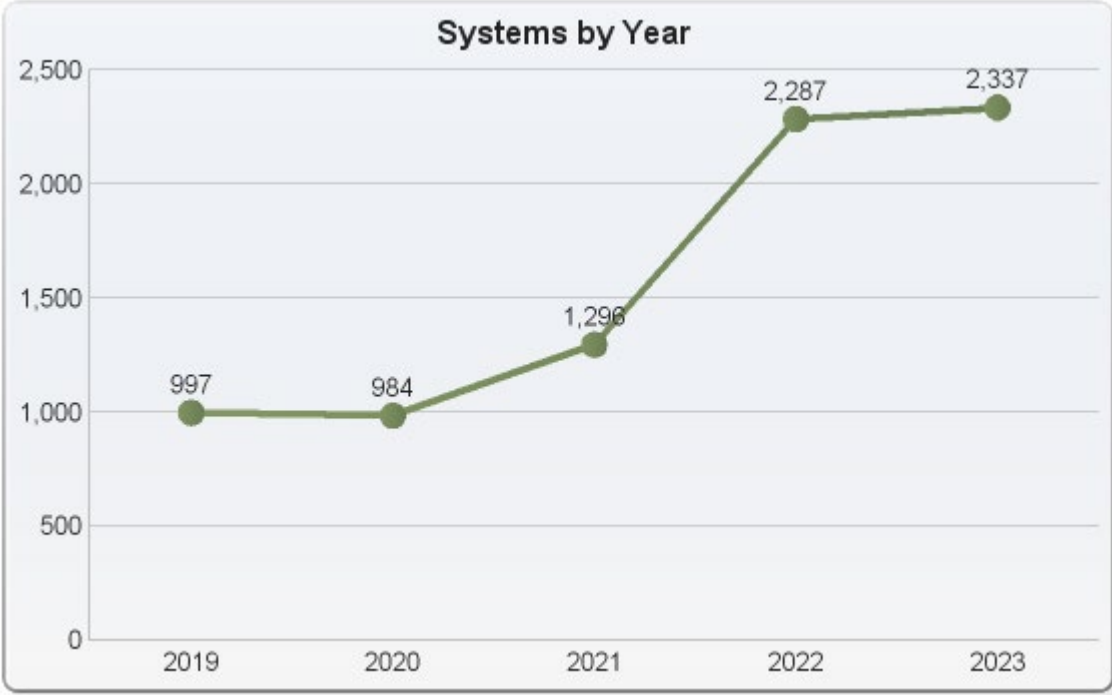


Interconnection Application Process & FAQs

Sara Rockwell, Engineering Technician

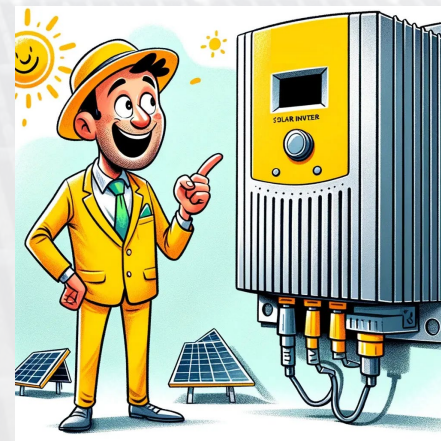
Central Hudson Electric Distribution Planning & Interconnection

New Interconnection Applications



What's New?

- There have been some small changes you may have noticed within your application
- Appendix K for ESS applications now within the application in Powerclerk
- Final Approval Request Form
 - Now requests proof of applied settings.
 - Inverter Settings changes were implemented January 1, 2023



Applications less than or equal to 50kW

- Applications for systems $\leq 50\text{kW}$ qualify for the expedited process
- Central Hudson reviews these applications and move these forward to Construction status once a complete application is received.
- The review includes verification of equipment specified in the application and on the drawings
- 3-line drawings are required for all 3-phase systems

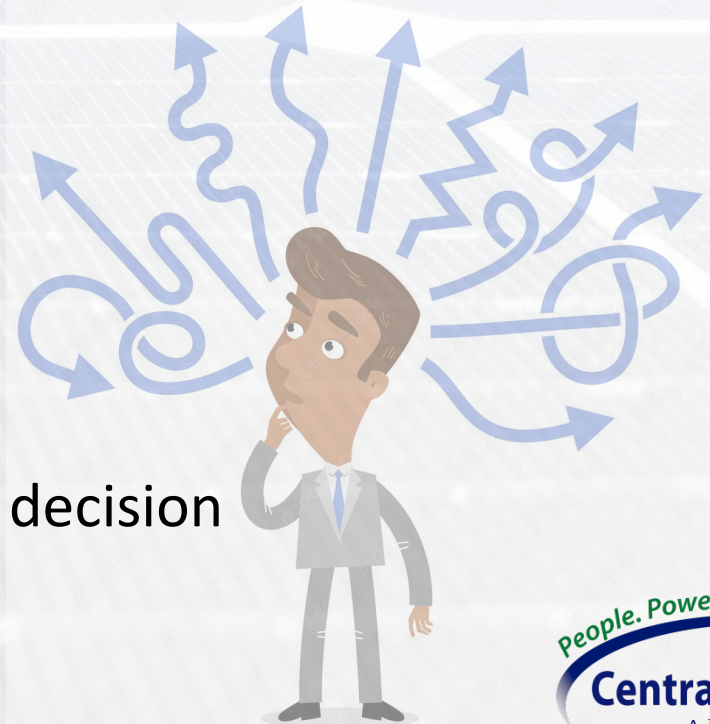


Applications greater than 25kW

- Systems greater than 25kW have a few additional requirements
 - A Site plan is needed that include the location of the AC disconnect
 - Per the NYS SIR, the AC Disconnect Switch is required to be located so that it may be opened by the utility at any time for specified reasons.
 - Central Hudson has clarified this in our Interconnection Guidelines to be:
 - The AC disconnect switch shall be capable of isolating the DER System from the Central Hudson system by means of an external, manual, visible break, gang-operated, load break disconnecting switch.
 - It should be located within 10 feet of the Service Entrance

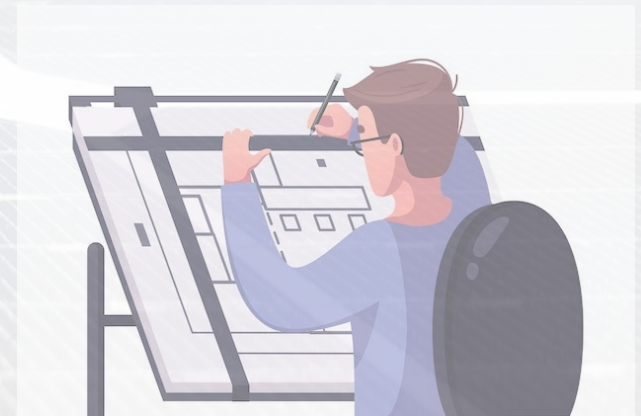
Applications Greater than 50kW Timeline Review

- Preliminary Screens Commence
 - 15 business days
- Upon completion a decision is needed within 10 business days
 - Request a Results Meeting
 - Proceed to Supplemental
 - Proceed to CESIR
 - Withdraw the project
- If proceeding to CESIR
 - Payment is needed within 10 business days of decision
 - Followed by the CESIR Design Package



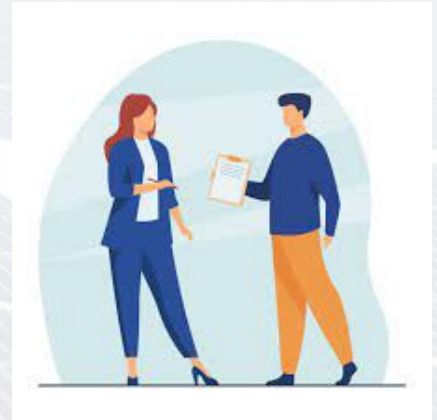
Project Modifications

- Central Hudson understands that sometimes designs change
- Whenever there is a change, new drawings can be submitted for review using the Project Modification Form.
- Central Hudson reviews these modifications within 10 business days to determine whether it's material or non-material.
 - Non-Material Modifications
 - Project can proceed with modifications
 - Material Modifications
 - Project must be withdrawn and a new application submitted, or
 - Project can proceed with original design.



Project Reassignments

- Over the course of a project, the customer or agent may change
- To have the project moved to a different customer or agent, there is a Project Reassignment form that can be sent to us thru Powerclerk.
- Central Hudson works to review and respond to these within 10 business days.



I have a Question

- All project details, updates, requests are managed via Powerclerk
- Did you know there is a tool that can be utilized to communicate directly with us right on your Project Page in Powerclerk?






Ask a Question



PowerClerk®

I have a Question

Ask a Question ?   

Ask a Question

Is your question related to a specific project?

Yes
 No

Which of these categories best describes your question? *

Select... ▾

Enter a title for your question: *

Please describe your question in detail: *

Remaining Characters: 4000

You can find your Questions and Responses beneath your Previous Forms section of your Project

- > Current Status
- > Project Summary
- > Available Forms
- > Previous Forms
- > Ask a Question Threads

Frequently asked questions

- What is this upcoming deadline for?
 - All upcoming deadlines can be found within your projects in Powerclerk
- How do I find the settings?
 - Required settings as well many other Interconnection Requirements can be found in Central Hudson's Interconnection Requirements Document located on our Website
- I've finished construction, Now What?
 - Log into Powerclerk and submit your Meter Set Request, DER Affirmation form and Final Interconnection Form

Questions?

