



All Things EV

2021 Solar Summit

Agenda

- Electric Vehicles & Central Hudson
- Central Hudson Programs
- Types of Chargers
- Public Charging in CH Territory
- Electrification Going Forward

Electric Vehicles & Central Hudson

- Transportation account for up to 40% of the Greenhouse gases
- A growing number of Customers have interest in Electric Vehicles
- Being the electric supplier, Central Hudson is the path to EV supply
- Ensuring the electric system is ready
- Educating customers and Investing

Central Hudson's EV Page



About Electric Vehicles



How to Charge



Purchase Incentives



Green Your Fleet



Business Charging Incentives



Electric Vehicle Events



Electric Vehicle Infrastructure Make-Ready Program



Central Hudson's Role



Electric Vehicle Time of Use Rate

What Company Programs are available?

- DCFC Incentive Program
 - Up to \$44,000 in incentives per DCFC Plug
 - Public Stations
 - Paid annually through 2025
 - Program size is 100 plugs
 - 21 plugs already enrolled (79 more plugs are eligible)



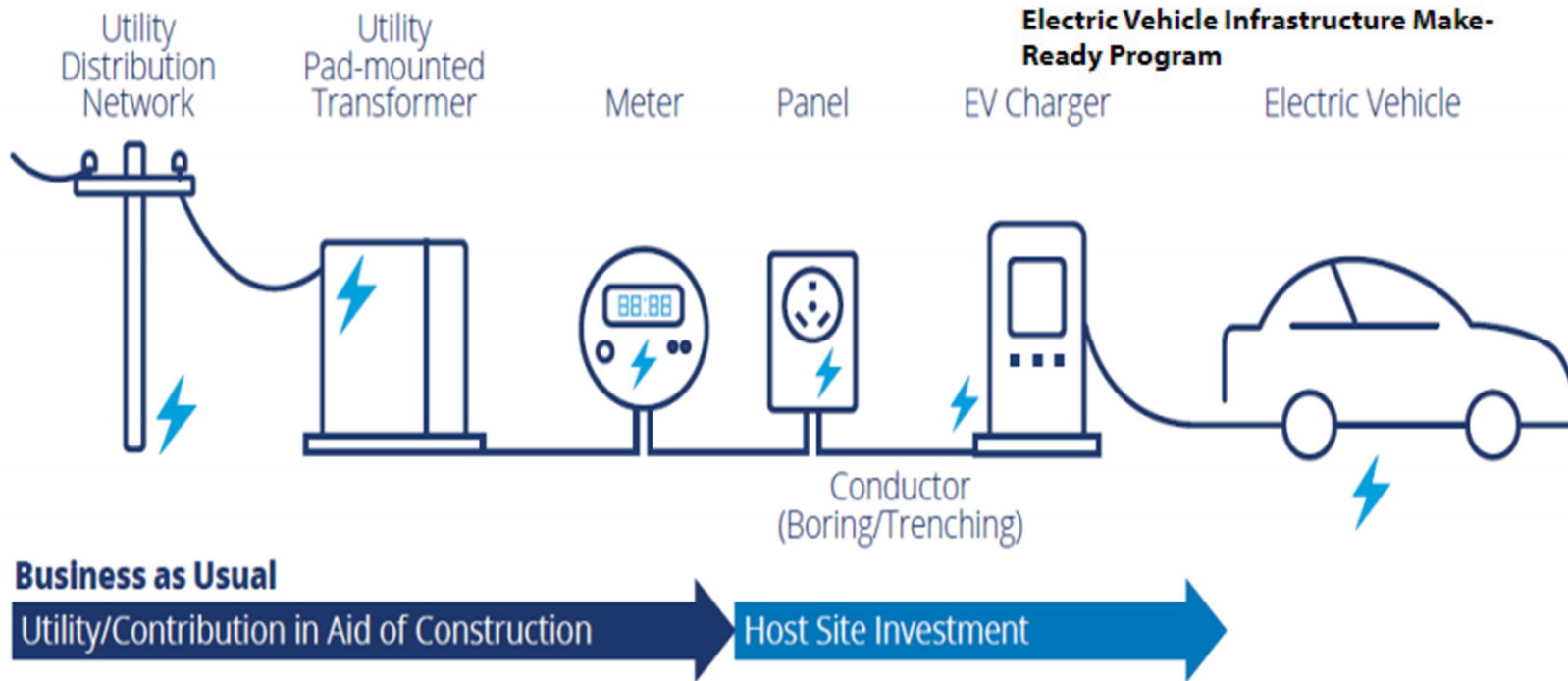
Business Charging Incentives

What Company Programs are available?

- EV Make Ready Program
 - Pays % of developer costs
 - Public or Private



Electric Vehicle Infrastructure Make-Ready Program



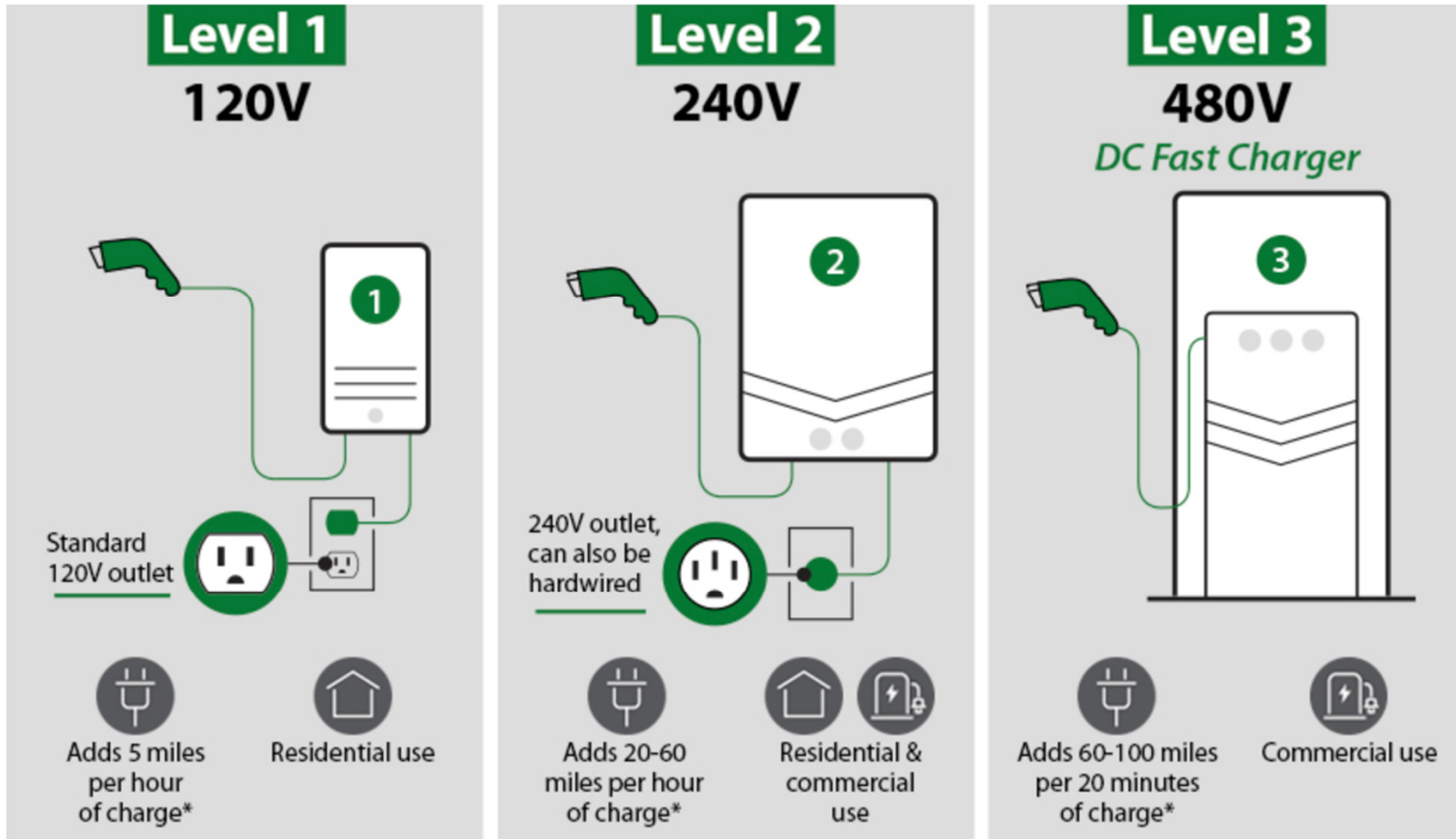
What Company Programs are available?

- Fleet Assessment Services
 - Working with Business and Municipalities
 - Assess Charging Capacity
 - Assess Vehicle Suitability
 - Review Rate Options



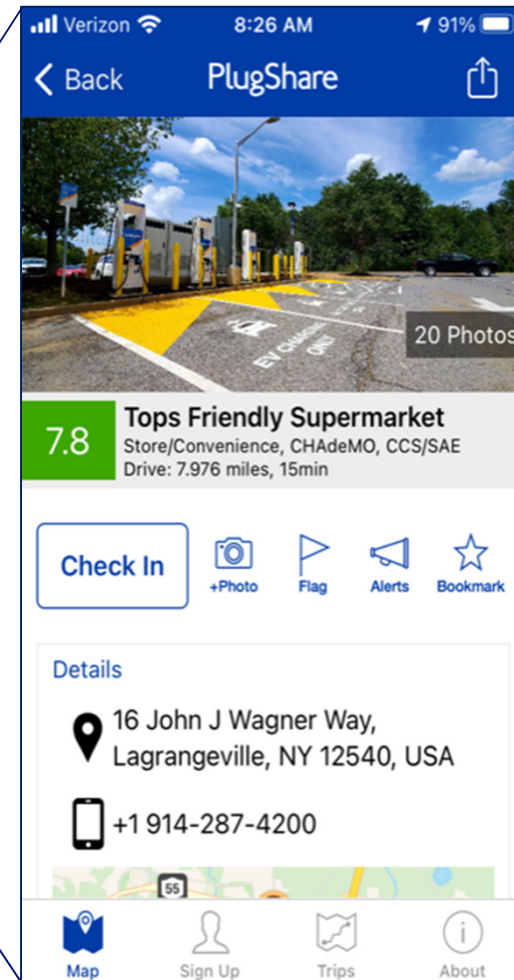
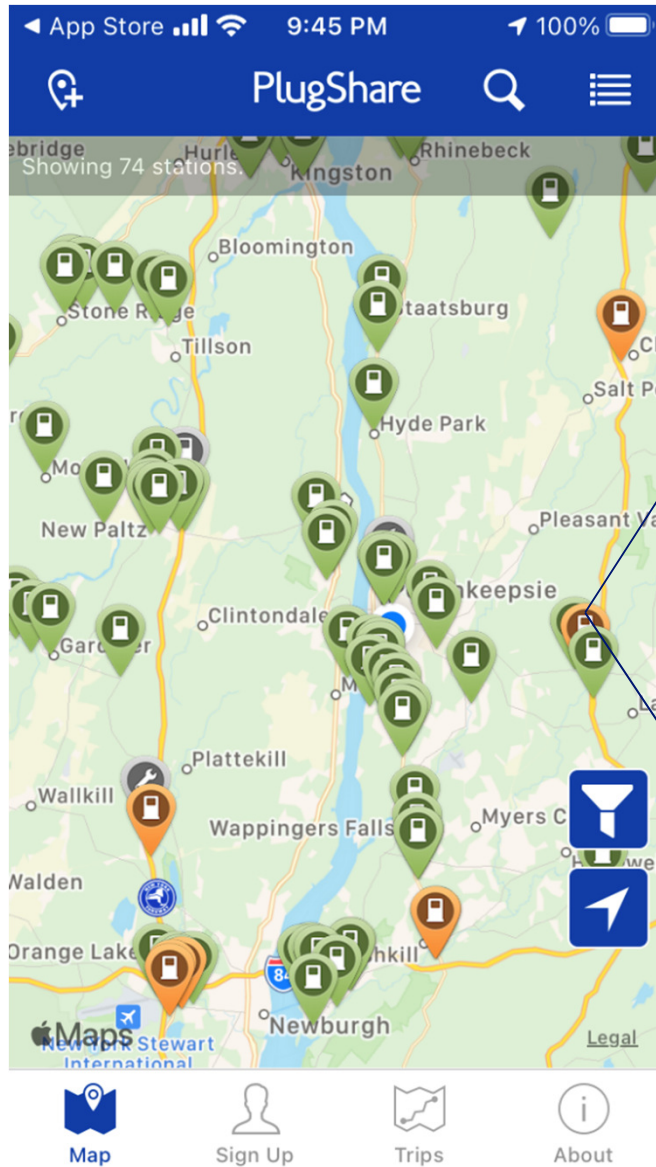
Green Your Fleet

Types of Chargers



* Estimated. Actual charge times may vary.

Current Public Charging Infrastructure



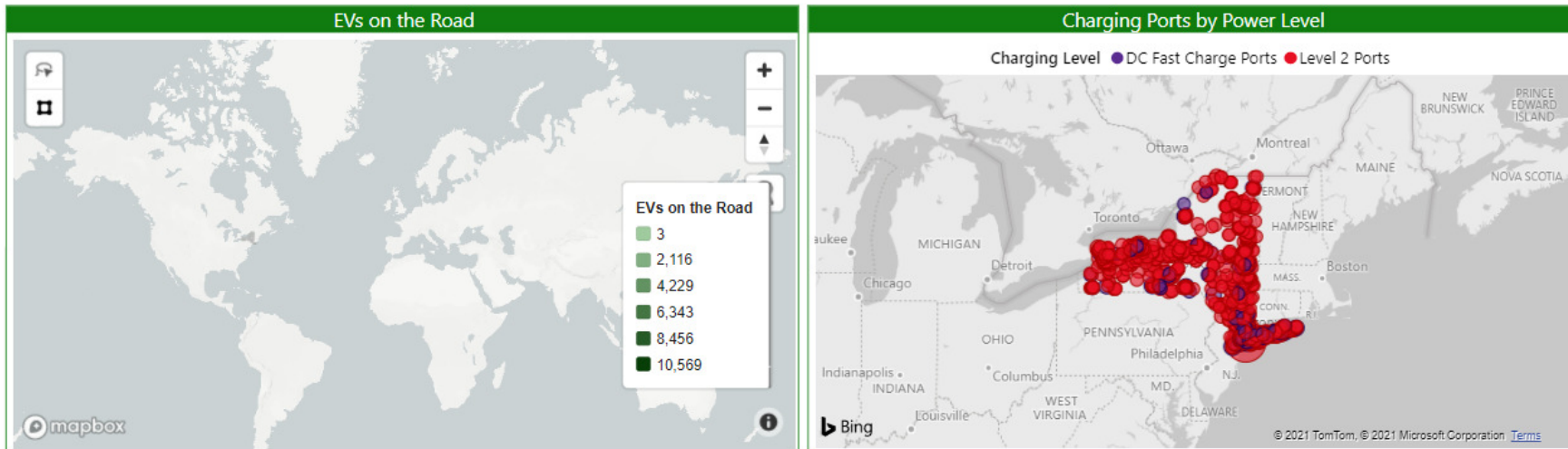
Current Public Charging Infrastructure

- Finding Information on New York

Market Overview

This dashboard provides a market overview of EV and charging deployment.

Reset to Default | HELP | Home



Utility	REDC	Select to view EV registrations and charging deployment by utility or REDC. Drill down for county and ZIP Code level data.											
Utility		Light-Duty Vehicles	BEVs	PHEVs	EVs	Level 2 Ports	DCFC Ports	LDVs per 1k People	BEVs per 1k People	PHEVs per 1k People	BEVs per DCFC Ports	EVs per Level 2 Port	LD EV Market Share
Electric Corp													
Central Hudson Gas & Elec Corp		443,927	1,410	1,441	2,851	373	71	710	2.26	2.31	19.86	7.64	0.64%
Orange & Rockland Utils Inc		373,157	1,231	922	2,153	107	42	639	2.11	1.58	29.31	20.12	0.58%
Steuben Rural Elec Coop, Inc		32,409	26	57	83	9	10	588	0.47	1.03	2.60	9.22	0.26%
Total		9,411,313	32,198	31,479	63,677	6,403	727	480	1.64	1.60	44.29	9.94	0.68%

EVs on the Road		Last Updated
BEV	PHEV	DATA.NY.GOV (2/1/202...
32,198	31,479	EVs on the Road 63,677
		EV Market Share 0.68%
		Original Registration EV Share 2.54%

Electrification Going Forward

- Managed Charging
- Medium/Heavy Duty Market
- Carbon Free Aviation



